

# Mod Children's Chair (Land of Nod Knock-off)

By **Reality Daydream**

Difficulty

Easy

Super cute yet sturdy and functional chair for the kiddos!



# Tools

## Kreg Tools



[Kreg® Pocket-Hole Jig 720](#)

## Other Tools

Drill Press

Scroll Saw

Table Saw

Tape Measure

Clamps

Drill (cordless)

Router

Router Table

Sander

# Materials

## Wood Products

**1** Board , 1x4 , 96"

**1** Board , 1x8 , 48"

## Hardware & Supplies

**25** 1 1/4" Pocket Hole Screws

**1** Wood Glue

# Cut List & Parts

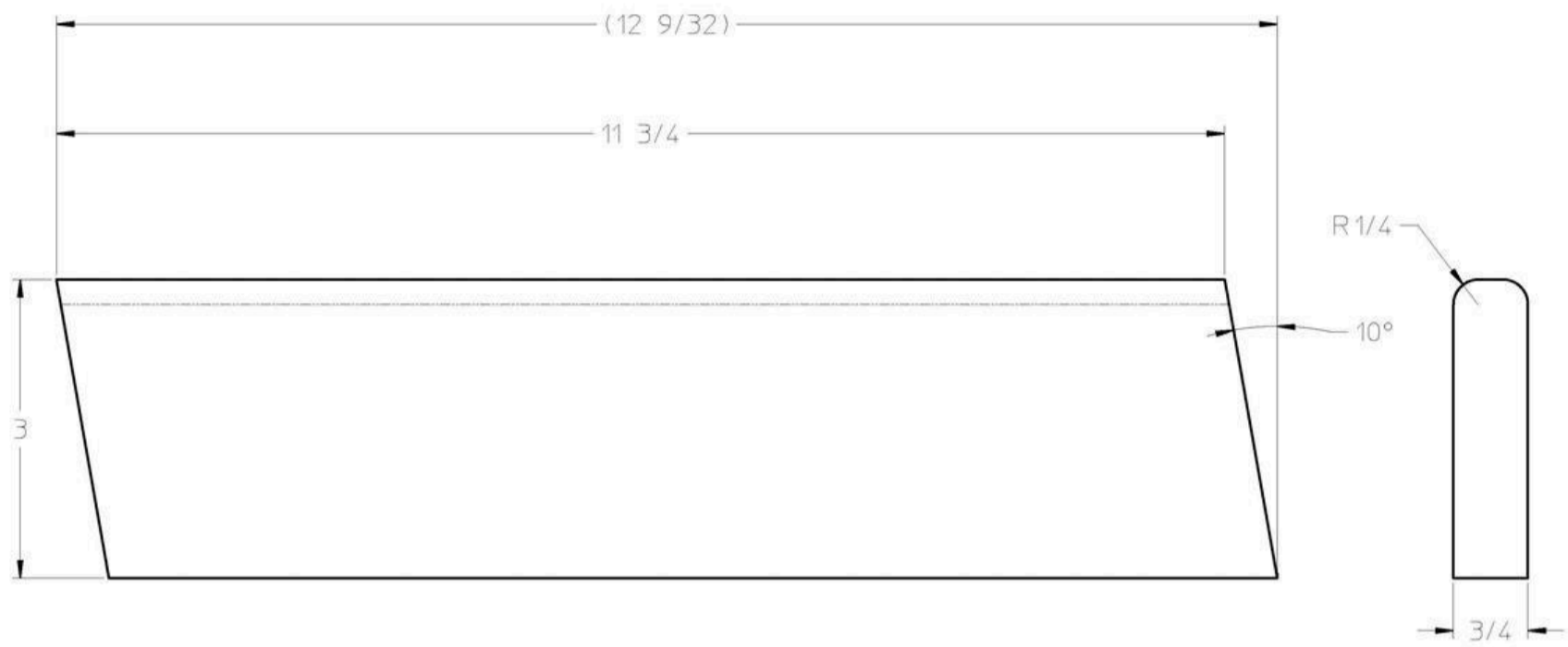
- 4 CHILDREN'S CHAIR, LEG , 3/4" X 3" X 12 3/8"
- 2 CHILDREN'S CHAIR, LEG JOINER , 3/4" X 3" X 6 3/8"
- 1 CHILDREN'S CHAIR, SEAT , 3/4" X 12" X 12 3/8"
- 1 CHILDREN'S CHAIR, BACK , 3/4" X 6 1/4" X 10 3/4"
- 2 CHILDREN'S CHAIR, SEAT BRACE , 3/4" X 1 1/4" X 10 1/2"

# Directions

1

## Leg

Cut four legs as shown and route the long outside edge using a 1/4" round-over bit.

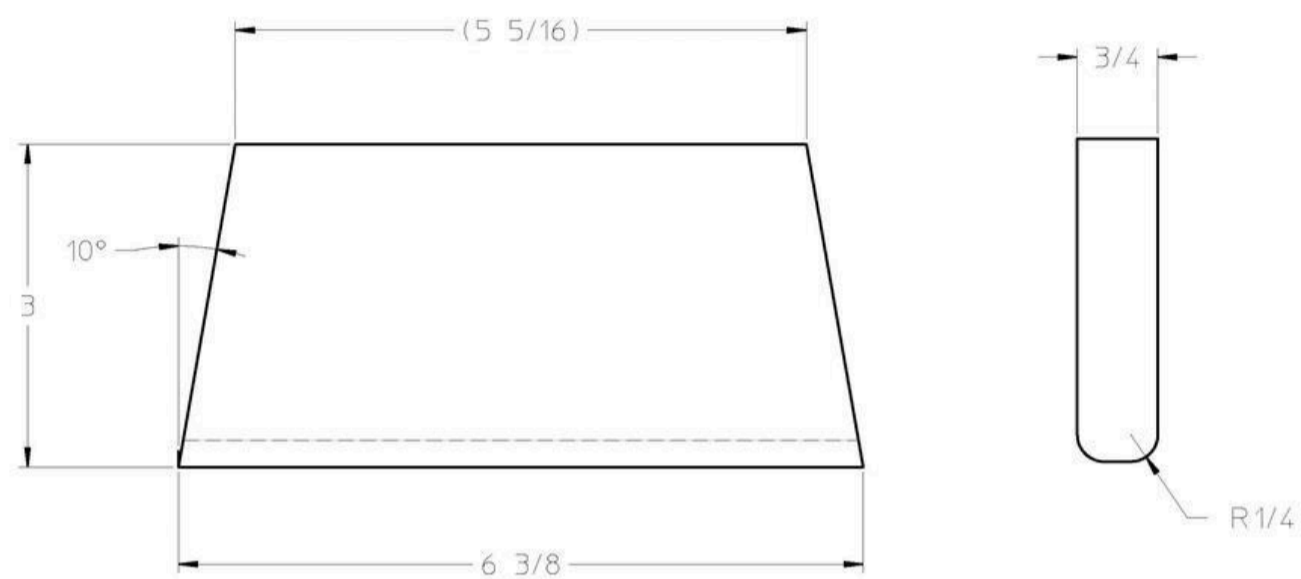


CHILDRENS CHAIR, LEG  
QTY 4  
SHEET SIZE: B SCALE 1:1  
ORIGINATOR: NRS DATE: 12NOV15

2

## Leg Joiner

Cut two leg joiners as shown.

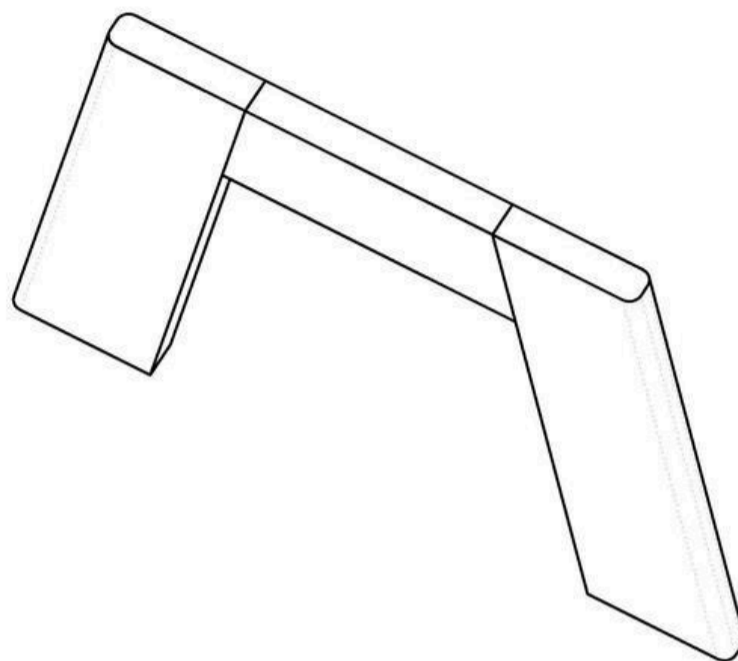
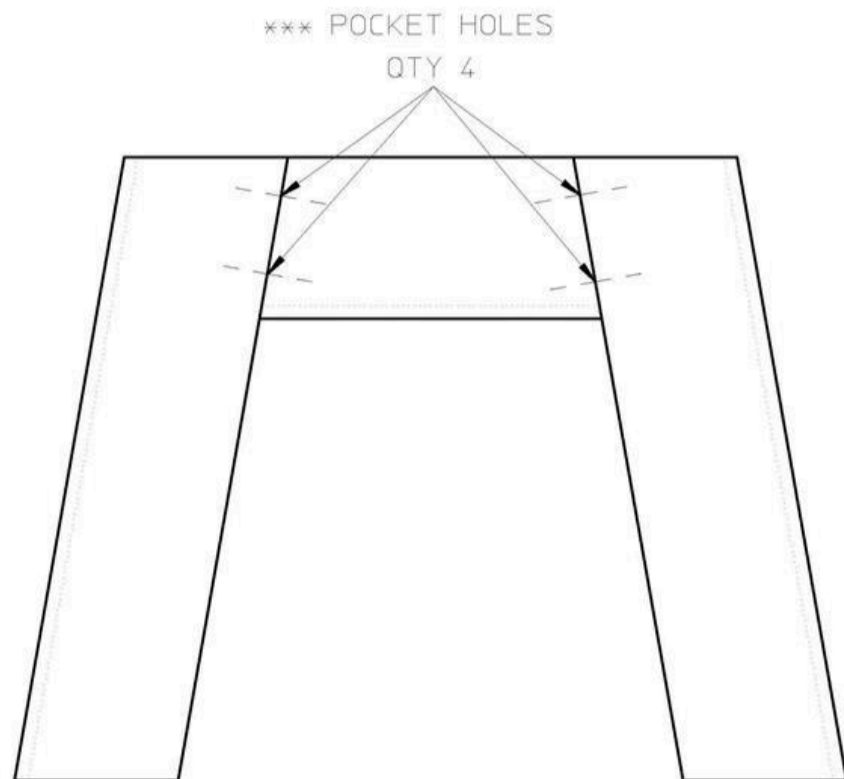


CHILDRENS CHAIR, LEG JOINER  
QTY 2  
SHEET SIZE: B SCALE 1:1  
ORIGINATOR: NRS DATE: 12NOV15

# 3

## Leg Assembly

Drill four pocket holes, glue, clamp and screw. Once cured route the inside edge of the leg and bottom of the leg joiner using a 1/4" round-over bit. Note: everything should be routed at this point except where the seat will be positioned.



CHILDRENS CHAIR, LEG ASSEMBLY  
SHEET SIZE: B SCALE 1:2  
ORIGINATOR: NRS DATE: 12NOV15

# 4

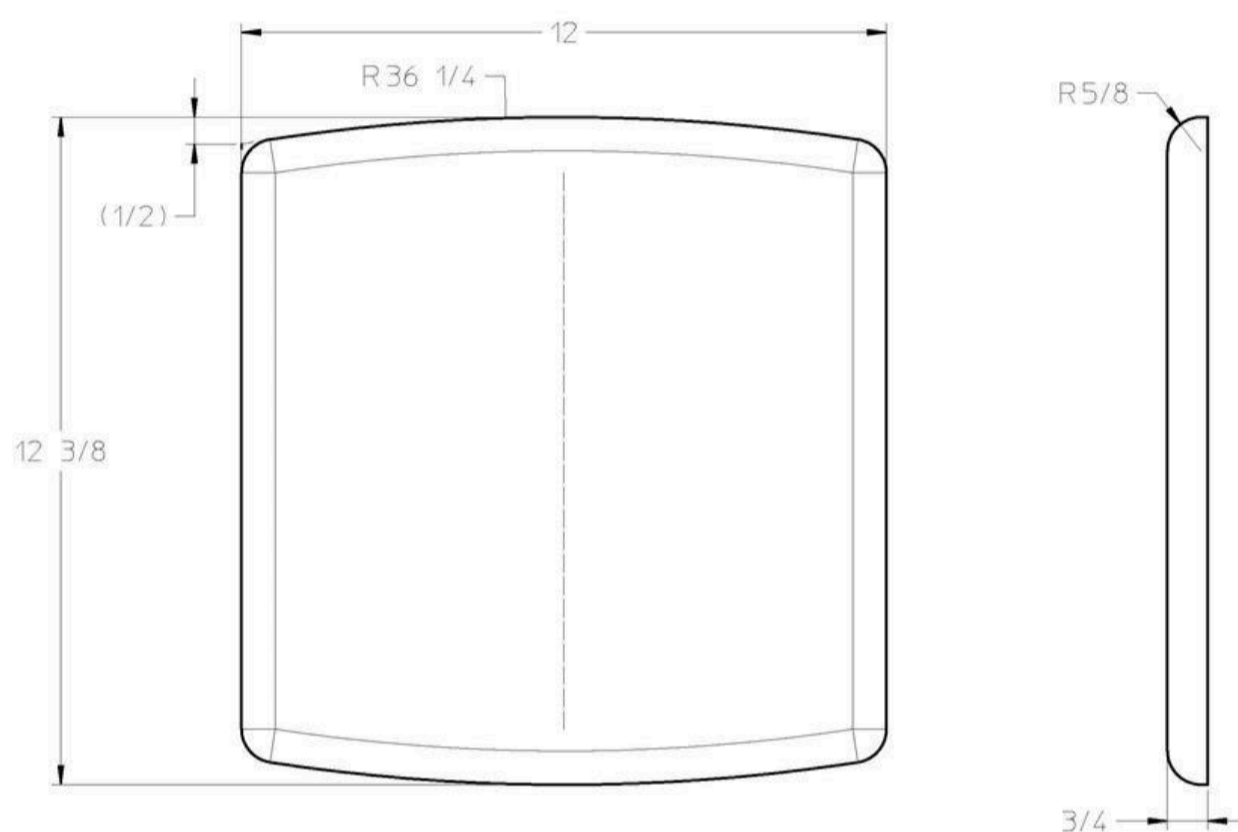
## Seat

Cut the seat as shown. If you don't have a board the is 12" wide glue a couple 1x8" boards together.

Mark and cut the 36 1/4" radius located on the front and back of the seat.

Note: I use a thin scrap of wood and flex it to mark the large radius on the front and back of the seat.

Route the top edges of the seat using a 5/8" round-over bit.



CHILDRENS CHAIR, SEAT  
SHEET SIZE: B SCALE 1:2  
ORIGINATOR: NRS DATE: 12NOV15

# 5

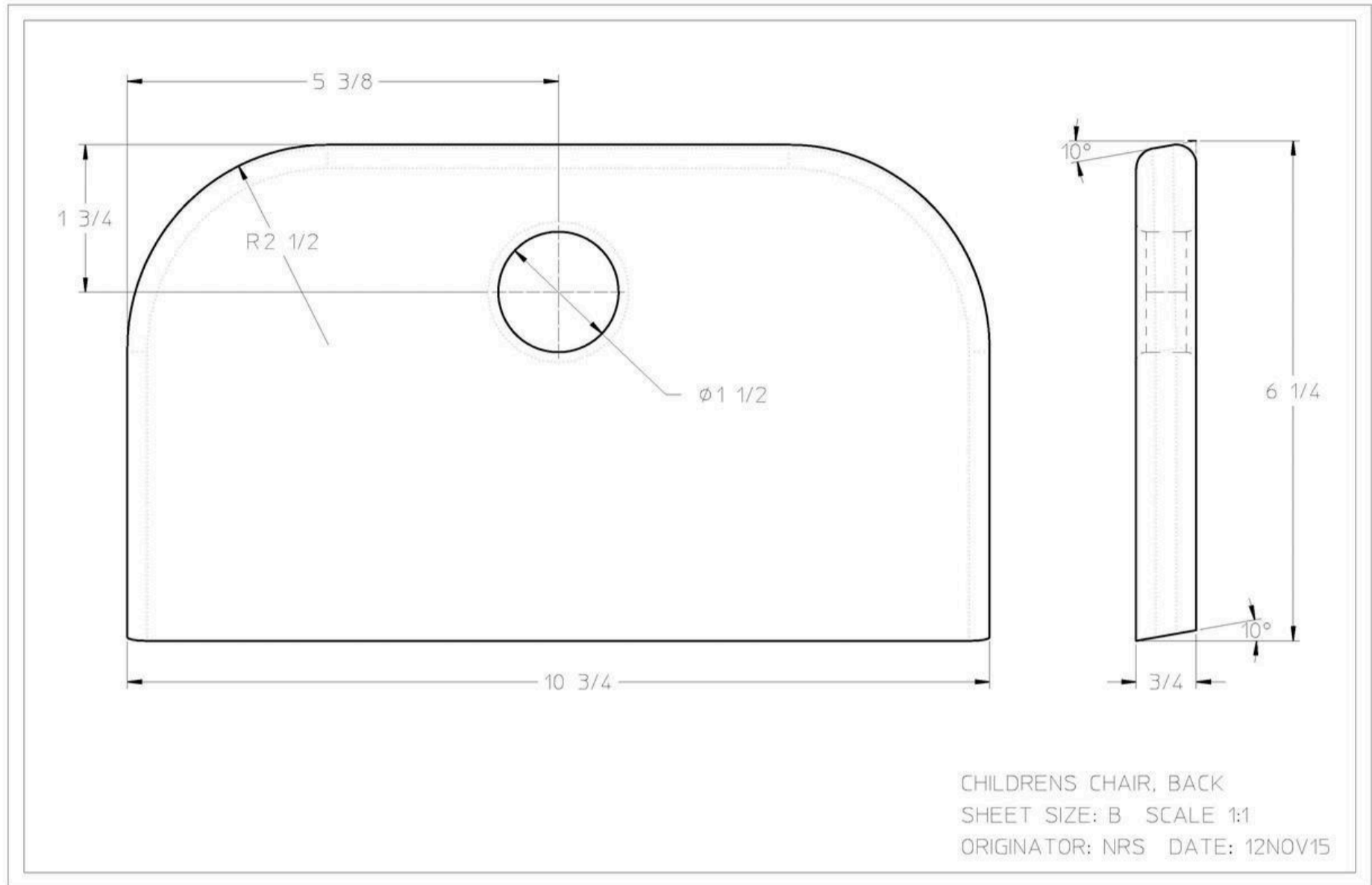
## Seat Back

Cut as shown.

Cut 2 1/2" radius corners using a scroll saw

Drill 1 1/2" through hole using a forstner bit and a drill press

Route outside edges with a 1/4" round-over bit



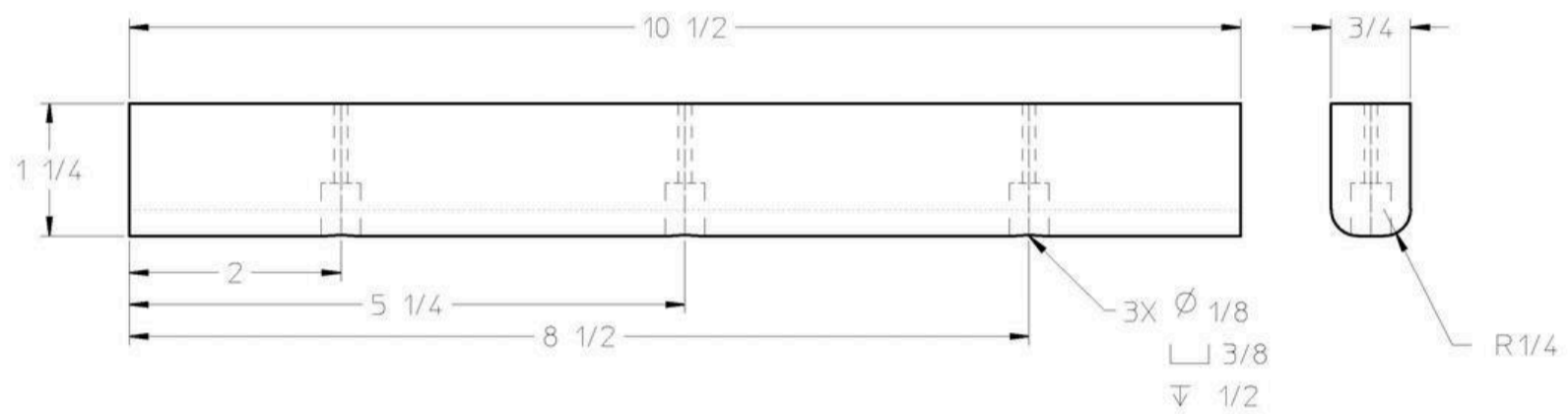
## 6

### Seat Braces

Cut two braces as shown.

Drill three counter-bores to attach the seat. Kreg's pocket hole drill bit works well for this.

Route bottom edges with a 1/4 round-over bit.



CHILDRENS CHAIR, SEAT BRACE  
QTY 2  
SHEET SIZE: B SCALE 1:1  
ORIGINATOR: NRS DATE: 12NOV15

# 7

## Assembly

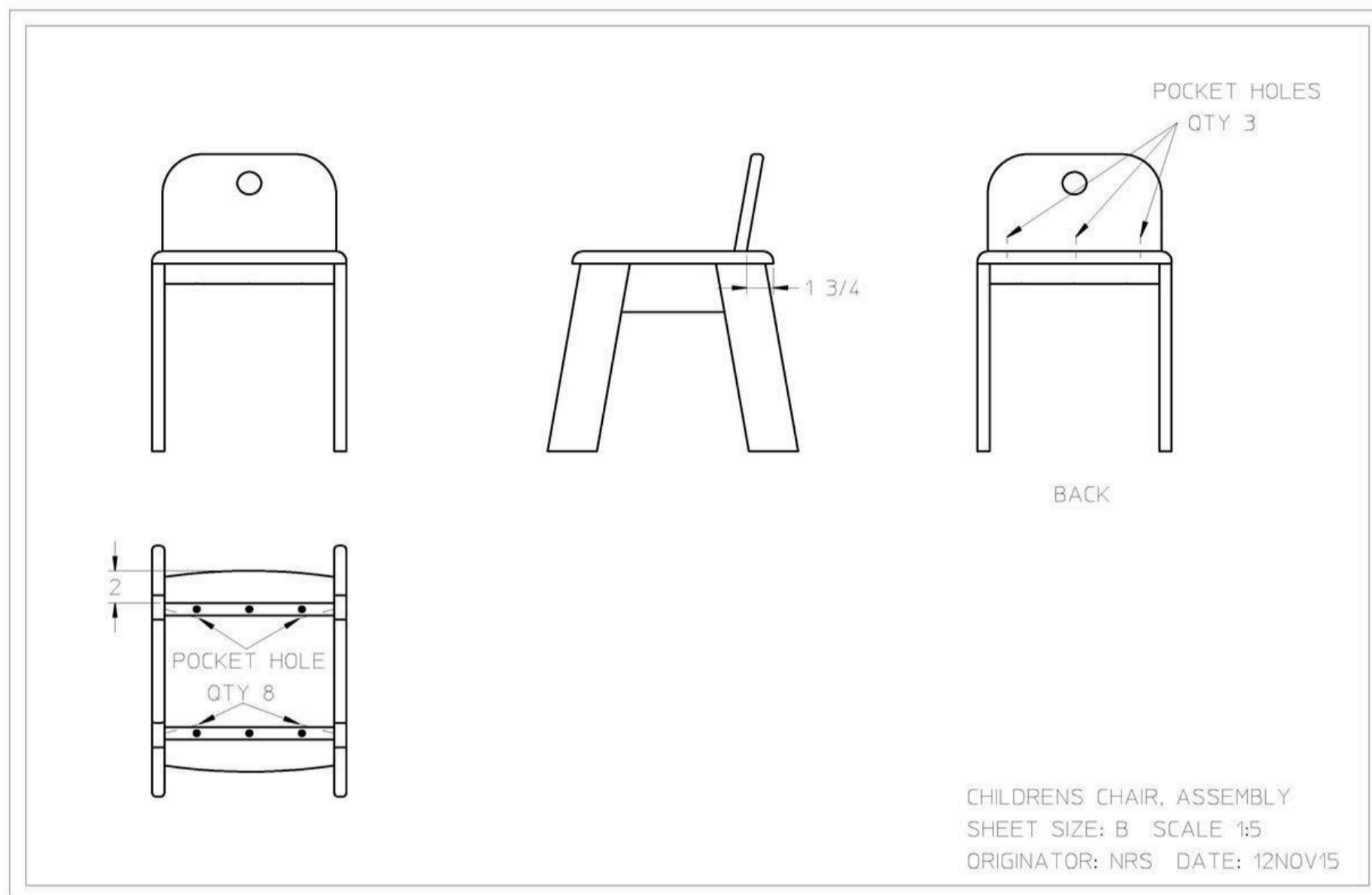
Assemble chair as shown.

Drill 2 pocket on the short edge of each seat brace.

Glue, clamp and screw the braces into the legs.

Glue, clamp and screw the leg assemblies to the seat.

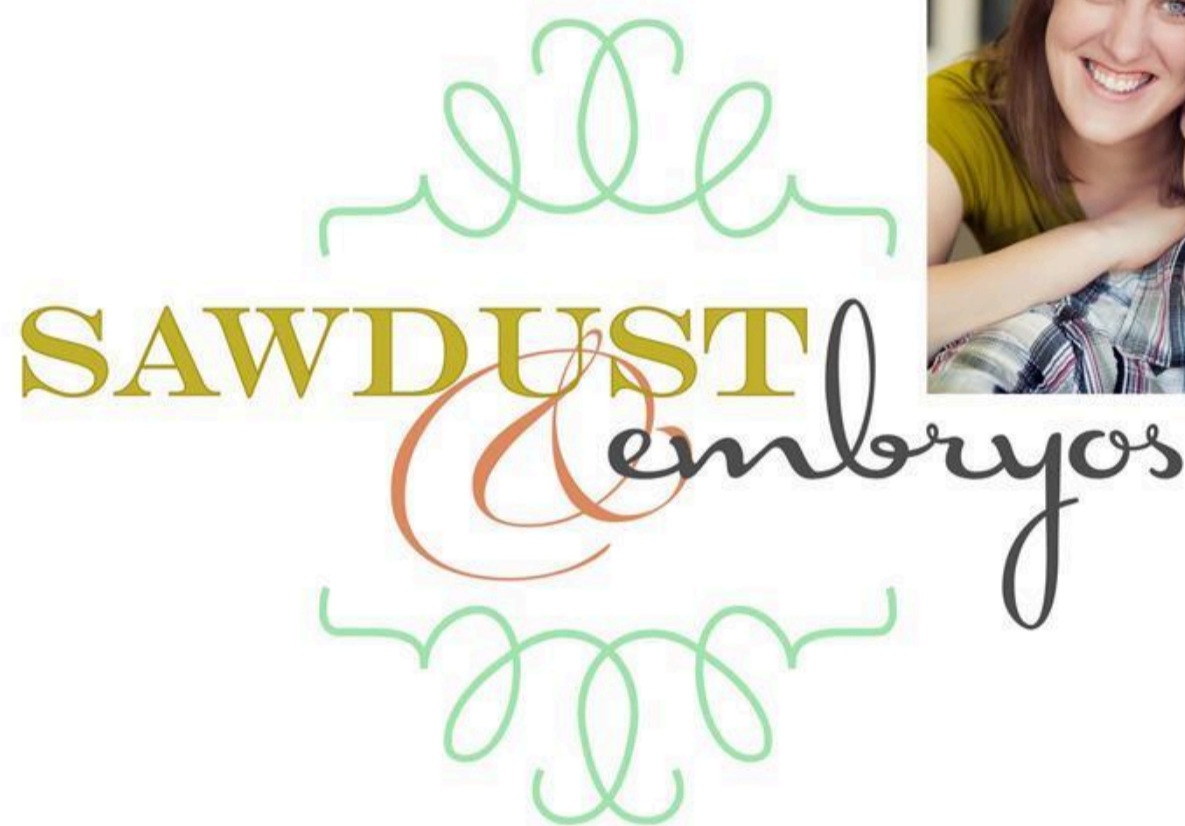
Flip the seat over, glue and screw the back to the seat...



8

**Review and CHECK US OUT...**

For more information check us out at [www.sawdustandembryos.com](http://www.sawdustandembryos.com)



[www.SawdustAndEmbryos.com](http://www.SawdustAndEmbryos.com)